

EURO-POOL FLAT PALLETS



Fig.: 1: Marking according to euro standard



Fig.: 2: EURO-Pool flat pallets

New product, German production IP PC UIC-435-2,

newly

uses

IP PC execution

UIC-435-2, repair after UIC-435-3 load-carrying capacity mind. 1000 kg

dimensions: 800 x 1200 x 144 mm

Requirement profile euro-pallets

2 cover wing tip edge rescuers (1200 x 145 x 22)

2 cover interior boards (1200 x 100 x 22)

1 cover central board (1200 x 145 x 22)

3 transverse boards (800 x 145 x 22)

2 soil wing tip edge rescuers (1200 x 100 x 22)

1 soil central board (1200 x 145 x 22)

3 blocks 145 x 145 x 78)

6 blocks (145 x 100 x 78)

24 nails

54 screw nails

1. Characteristics of the euro pallet



Fig.: 3: EURO-Pool pallet

1.1 Load-carrying capacity

The euro pallet is appropriate during the support in the shelf or on the fork of a corridor promotion vehicle for the following loads:

- 1000 kg, (nominal load) if the load is arbitrarily distributed on the pallet surface.
- 1500 kg, if the load is evenly distributed on the pallet surface.
- 2000 kg, if the load in compact form rests upon full laminar and homogeneously the entire pallet surface.

In the pile the additional load of the lowest pallet amounts to maximally 4000 kg, if it is on an even, horizontal and rigid surface and the load horizontal and full-laminar rests upon.

1.2 Moisture content of wood

- The moisture content of wood may not exceed 22% of the weight of the dry wood (Darrweight).
- With smaller moisture content of wood are determining the shrinking value mass of the UIC 435-2.
- A moisture content of wood between 22 and 26% applies during the quality inspection as minor defect.

1.3 ISPM 15 (international standard for plant-health measures)¹

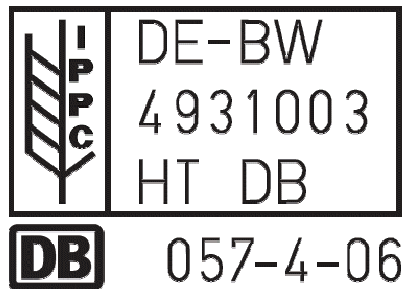


Fig.: 4: Print ISPM 15

- Euro pallets are treated only when desired the customer in accordance with ISPM 15.
- In accordance with ISPM one recognizes 15 treated euro pallets by the penetrations on both central blocks of the long side.
- Likewise a penetration is possible in accordance with ISPM 15 on both central blocks of the narrow side.
- Please you note that a treatment with methyle bromide (MT) for euro pallets is forbidden.

1.4 Penetrations

Penetrations on euro pallets, which are manufactured under license of the German course (railways):



Fig.: 5: Left corner block

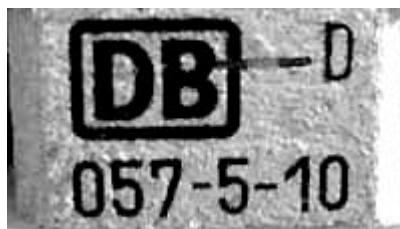


Fig.: 6: Central block



Fig: 7: Right corner block

1.5 Transverse boards

- The transverse boards of the euro pallet must exhibit a thickness between 22 and 25 mm.
- At them no tree edges may be.
- For the transverse boards no poplar may be used.

These regulations apply likewise to repaired euro pallets.

¹ More Information: <http://www.bba.de/ag/gesund/national/texte/II-verpholz.pdf>

1.6 Nail picture

- The position of the used 78 nails is prescribed, so that the diagonal rigidity of the pallet is ensured.

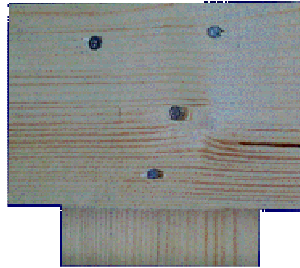


Fig.: 8: Nail picture diagonal rigidity

- The nail picture must to be evenly and the nails have in the context of the building standard (UIC 435-2) the greatest possible distance to have to each other.

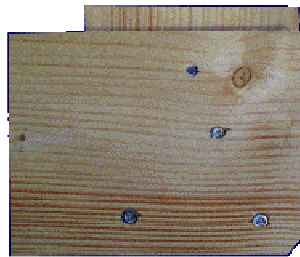


Fig.: 9: Nail picture according to building standard UIC 435

- All nails, which are used for the assembly by EPAL/Europallets, carry in principle a head marking, which consists of two letters.
- Only of EPAL certified nails, which besides in neutral Pruefinstitut were examined, may for the assembly of the EPAL/Europaletten will use.



Fig.: 10: Nail picture "certified nails"

Exchange criteria for euro pool flat pallets

1.7 Left corner block

- All euro pallets, which are manufactured in the scope of responsibility of the quality community pallets e.V., carry left in each case block of the long side the penetration EPAL on that (in the oval).



Fig.: 11: Left corner block

Repair regulation:

- A replaced left hitting a corner block of a euro pallet carries pallets in the scope of responsibility of the quality community e.V. always the penetration EPAL (in the oval) with point of repair.



Fig.: 12: Left corner block „repaired“

1.8 Central block

All euro pallets, which are manufactured in the scope of responsibility of the quality community pallets e.V., must exhibit the two central blocks of the long side the following penetrations:

- Railways (in the emblem). Besides the indication "D" for Germany.
- Since the railway license was assigned also into other countries, also the following contractions can stand instead of the D:

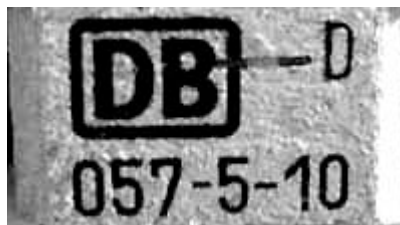


Fig.: 13: Penetration central block

Under the land character the EPAL is in principle – markclammy on a central block of a long side.

This EPAL - Mark-more clammy must be at the edges either red, blue or green colored.

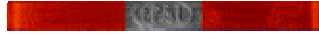


Fig.: 14: EPAL-Markclammy

Among them are number columns:

- The first three numbers (in this case 057) indicate the certified manufacturer.
- The middle number (in this case 9 = 1999) indicates the year of the production.
- The last two numbers (in this case 08 = August) indicate the month of the production.

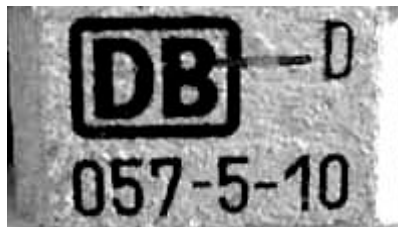


Fig.: 15: Central block "number columns"

Repair regulation:

A replaced central block carries no more penetration after the repair. On a central block of a long side the repair marking nail must be hit as indications of the normal repair.



Fig.: 16 and 17: Repair marking nail

- On the repair marking nail is above the abbreviation for the country, in which the repair was accomplished, in this case D = Germany.
- In the center is the indication EPAL (in the oval).
- Among them is the respective certification number of the repairer, who is responsible also in the context of the product liability for its respective repair.

1.9 Right corner block

All euro pallets carry the penetration EUR on the right hitting a corner block of the two long sides as uniform indication (in the oval).



Fig.: 18: Marking right hitting a corner block

Repair regulation:

A replaced right hitting a corner block of a euro pallet always carries the penetration EUR (in the oval) with point of repair in the scope of responsibility of the quality community pallets.



Fig.: 19: Right hitting a corner block repair marking

1.10 Soil boards

- The soil boards of the euro pallets must exhibit a thickness between 22 and 24 mm.
- At them no tree edges may be.
- The board edges must be tapered. All three soil boards must be tapered on the board top side inside and outside.

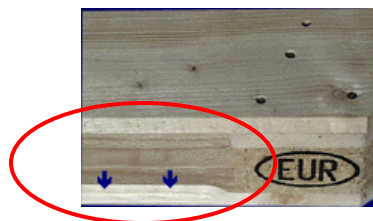


Fig.: 20: Soil board

These regulations apply likewise to repaired euro pallets.

2 Exchange criteria in the European pallet pool for euro pallets.²

Thus an exchangeable euro pallet looks 80x120 cm. With the exchange it is demanded that the pallets correspond to the exchange criteria.



Fig.: 21: Exchangeable euro pallet

European Pallet Association

EPAL: Quality-examined = boundless surely

Gütegemeinschaft Paletten e.V.
Hermelinweg 14
D-48157 Münster
Fon: 0049-251/1620171
Fax: 0049-251/1620176

² More Information: <http://www.gpal.de>

Not exchangeable euro pallets:

If euro pallets exhibit or several of the following damage, the pallets are not exchangeable and must be repaired according to the regulations of the UIC of instruction card 435-4.

2.1 A soil or covering tip edge-saved is in such a way abgesplittert that more than one nail or bolt shank is visible.



Fig.: 22: Splintered cover-wing tip edge-save

2.2 The marking EUR right as well as the indications of a course left are missing.



Fig.: 23: Missing EUR markings

2.3 A board is missing



Fig.: 24: A board is missing

2.4 A block is missing or is in such a way split that more than one nail is visible



Fig.: 25: A missing block

2.5 A board is crosswise or diagonally broken



Fig.: 26: A broken board

2.6 More than two soil or cover wing tip edge rescuer is in such a way splintered that more than one nail or screw pin is visible.



Fig.: 27: Splitting soil or cover wing tip edge rescuer

2.7 Further characteristics (schlechter general state)

- The load-carrying capacity is not any more ensured (rotten and putridly, strong splinterings).
- The contamination is so strong that the loads are contaminated.
- Strong splinterings are present at several blocks.
- Obviously inadmissible construction units were used (e.g. to thin boards, to narrow blocks).