

LATTICE BOX PALLETS



Fig. 1: Marking according to euro standard

1. Exchange criteria in the European pallet pool for EUR-Lattice box pallets

Thus an exchangeable EUR Gitterboxpaletten looks. With the exchange it is demanded that the EUR Gitterbox corresponds to the exchange criteria.

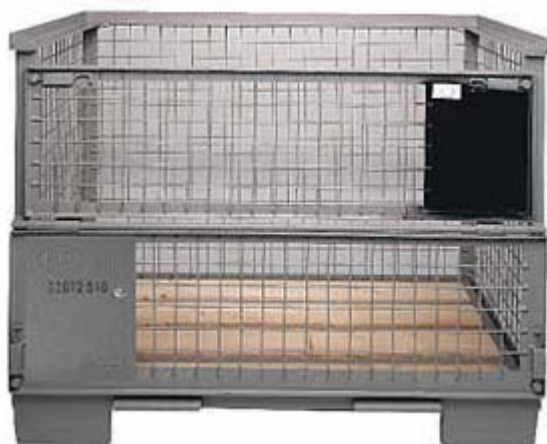


Fig. 2: EUR-Lattice box pallet

European Pallet Association

EPAL: Quality-examined = boundless surely

Gütegemeinschaft Paletten e.V.
Hermelinweg 14
D-48157 Münster
Fon: 0049-251/1620171
Fax: 0049-251/1620176

Only of the EPAL certified repair companies may repair this EUR Gitterboxpaletten. One recognizes duly repaired EUR Gitterboxpaletten by the blue repair plaque on the label board.

1.2 Not exchangeable EUR-Lattice box pallets

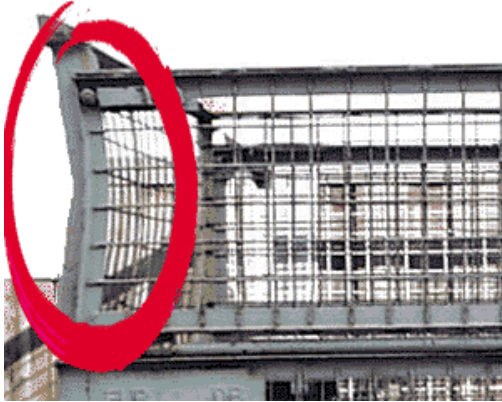
Characteristics:



Fig. 3: Characteristics "not exchangeable criteria"

1.2 Characteristics and description:

As exchangeable the lattice box pallet is not considered if ...



1

Fig. 4:

1.2.1 ... the steep angle essay or corner column is deformed.



2

Fig. 5:

1.2.2 ... the front wall flaps any longer to be opened or no more not closed do not know.



3

Fig. 6:

1.2.3 ... the soil framework or the feet is so bent that the euro lattice box stands cannot for no more no longer evenly on the four feet or without danger be stacked.

Exchange criteria for lattice box pallets

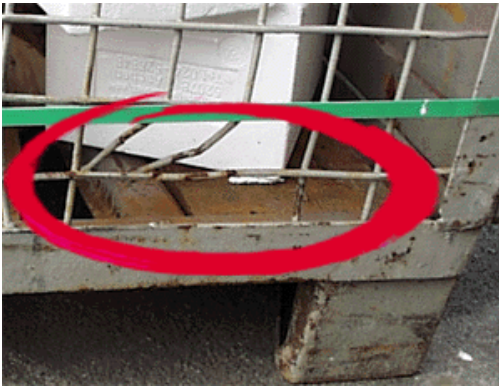


Fig. 7:

- 1.2.4 ... the round steel bar lattices tore, so that the wire ends rise up inward or outward (a mesh per wall may be missing).

4

5



Fig. 8:

- 1.4.5 ... the indication of the course/pallet organization and/or the indication EUR (in the oval) are missing or are illegible.

6



Fig. 9:

- 1.2.6 ... the general state by rust or contamination is so bad that loads can be contaminated.

1
2
3
4
5
6

Exchange criteria for lattice box pallets

2 The label board

2.1 The grey label board must have the following characteristics:

In the upper third of the board the coined/shaped indications EUR (in the oval) and railways (in the emblem).

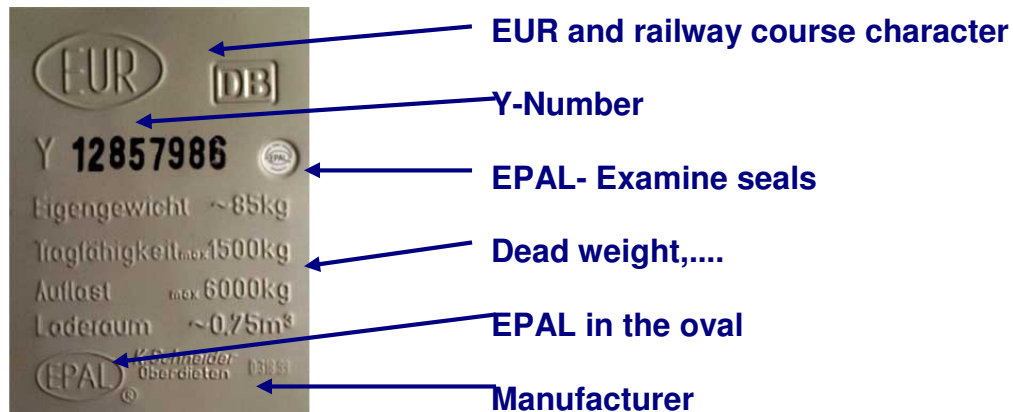


Fig. 10: Label board

Euro lattice boxes are built after UIC 435-3 and in the European pallet pool exchangeable only if the label board exhibits the following characteristics!

The indicated regulations apply likewise to repaired euro lattice boxes.

2.2 To the euro lattice boxes, which are manufactured in the scope of responsibility of another railway, the following apply...

2.2.1 ... Course character:



Fig. 11: EUR Course character



Fig. 12: DB-Course Character

In the upper third of the board the coined/shaped indications EUR (in the oval) and railways (in the emblem).

2.2.2 ... Y-Number:

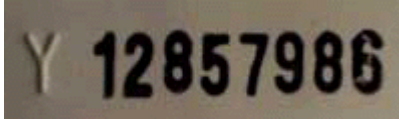


Fig. 13: Y-Number

- Among them one is with black color imprinted seven or eight-digit y-number
- The letter Y must be coined/shaped.
- Each y-number is assigned only once by the EPAL.

Repair regulations:

- Faded y-numbers must become with the repair again in black color applied (imprinted).
- Each y-number is assigned only once by the EPAL. EPAL assigns special number rows for the repair, in order to be able to recognize falsifications or inappropriate repairs better.

2.2.3 ... EPAL- Examine seals:



Fig. 14: New Lattice box



Fig. 15: Repair Lattice box

- Beside the y-number is a recess, into which after positive examination the falsification safe silver EPAL Examine seals is glued on.

Repair regulations:

- As indication of the normal repair a blue EPAL seal is in the recess in place of the silver EPAL seal, on which the certification number of the repairer is.

2.2.4 ... Dead weight, load-carrying capacity, load, loading space:

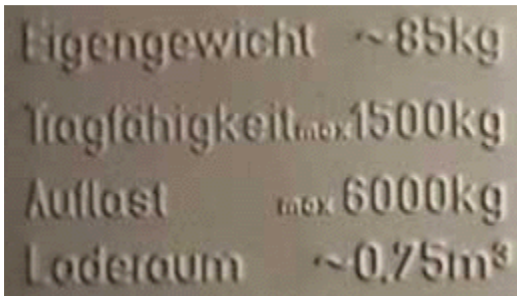


Fig. 16: Various data

- Among them are the coined/shaped labels:
 - Dead weight ~ 85 kg
 - Load-carrying capacity max. 1500 kg
 - Load max. 6000 kg
 - Loading space ~ 0,75 m

2.2.5 ... EPAL in the oval:



Fig. 17: EPAL in the oval

2.2.6 ... Manufacturer:



Fig. 18: Manufacturer

2.2.7 ... Label board until 1995:



Fig. 19: Quality test seal until 1995

The label board of older euro lattice boxes (until 1995) looks somewhat differently:

1. The label board is black and the y-numbers is August- printed in white color.
2. The silver Quality examine seals (fig. 19) carries not the label EPAL (in the oval), but in the center among other things the label RAL RG 993.
3. The load border amounts to only max ones. 900 kg.